

NS-6000S Series

10/100 Unmanaged PoE Switch



NS600S-4P2U/NS600S-8P2U

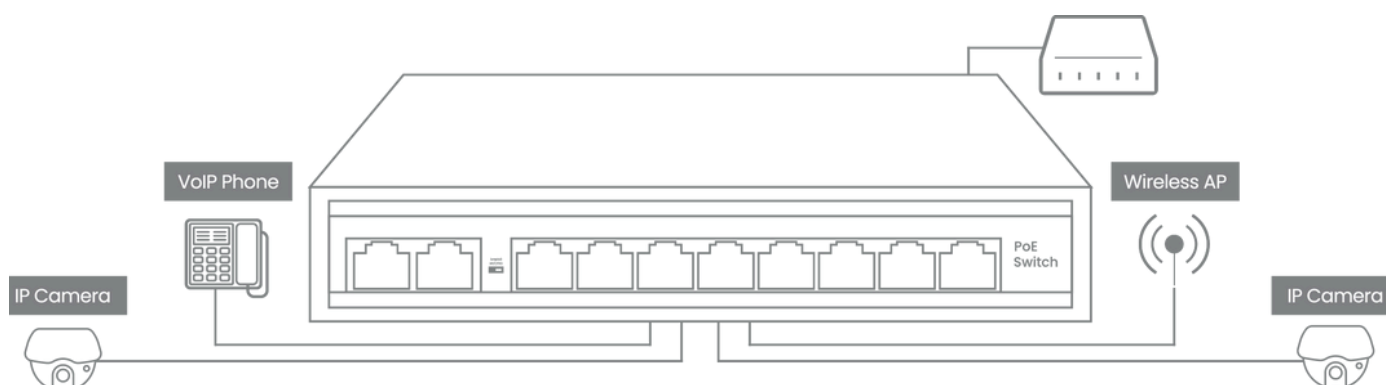
4 Port / 8 Port 100M Unmanaged PoE Switch

OVERVIEW

The NS-6000S Series PoE switch meets the demand for PoE power supply. It adopts the latest high-speed Ethernet switching chip and ultra-high backplane bandwidth design, with extremely fast data processing capability to improve smooth data transmission performance. It has 4/8 PoE-powered RJ45 ports and 2 RJ45 uplink ports. All eight RJ45 ports support the IEEE 802.3af/at standard, with a maximum power supply of 30W for a single port and 65/120W for the whole machine. It can automatically detect and identify powered devices that comply with the IEEE 802.3af/at standard and supply power for the priority mechanism through the network cable.

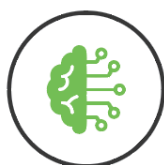
FEATURES

- 4/8 100Mbps PoE ports, 2*10/100Mbps uplink port
- Support IEEE802.3af/at
- Support restrain network storm, VLAN function
- Support Max Transmission distance up to 250m
- All port supported by MDI/MDIX auto flip and self-negotiation
- Built-in power supply
- Maximum power of single PoE port: 30 W
- Whole machine power: 65W/120W
- Adopts store-and-forward architecture
- Fanless, natural cooling, small, compact and quiet design, suitable for desktop or wall
- Support lightning protection 4KV

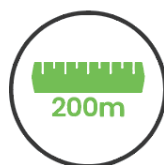


Specifications

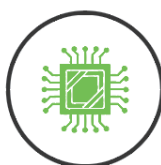
Model			NS-6004P2F	NS-6008P2F
Power	Power Adapter Voltage		AC 110V-240V	
	Consumption		65W	120W
Network Connector	Network Port	PoE Ethernet Port	1~4 Port : 10/100Mbps	1~8 Port : 10/100Mbps
		Ethernet port	Uplink Port : 10/100Mbps	
	Transmission Distance		1~4 Port : 100Mbps:0~100m; 10Mbps: 0~250m;	1~8 Port : 100Mbps:0~100m; 10Mbps: 0~250m;
			Uplink Port : 0 ~ 100m	
	Transmission Medium		Cat5/5e/6 standard network cable	
Network Switch	Network Standard		IEEE802.3/802.3u, IEEE802.3x, IEEE802.ab	
	Switching Capacity		1.2Gbps	2.0Gbps
	Packet Buffer Memory		1Mbits	
	Throughput		0.8928Mpps	1.488Mbps
	MAC Table		1K	
	Packet Forwarding rate		10Mbps:14880pps/port 100Mbps: 148800pps/port	
Power Over Ethernet	PoE Standard		IEEE 802.3af/at	
	PoE Power Supply		12+ ,36 - , 4 core	12 45 +,36 78-, 8 core
	PoE Power		af=15.4W,at=30W for each port	
RJ45 port	Port Function		Power priority mechanism, fast and forward, MAC automatic learning and aging IEEE802.3X Full-duplex and mode and backpressure for Half-duplex mode	
LED Indicator	LED Indicator		LINK/ACT.100Mbps; PoE Status Indicator; Power indicator;Extender	
Environmental	Working temperature		0℃~55℃	
	Relative Humidity		20~95%	
	Storage temperature		-20℃~70℃	
Mechanical	Dimension (L×W×H)		190mm*125mm*38mm	
	Color		Black	
	Weight		0.95kg	



Intelligent PoE
Management



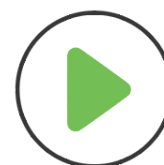
Up to 200m
Long Range
PoE Transmission



4/8-Core Adaptive
Power Supply with
Less Power Loss



6KV Surge Protection
to Improve Reliability
in Harsh Environment



Design for Video
Transmission