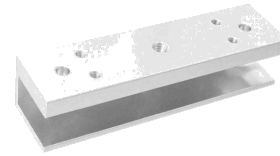


NX-280U

EM Lock Bracket for Frameless Glass Doors



*Heavy-duty hold.
Clean installation.*

Heavy-duty U-shaped mounting bracket engineered for 280 KG class EM lock installations on frameless glass doors. The NX-280U is machined from **high-strength aluminum alloy**, precisely accommodating glass thickness of 10–15 mm. Its compact 180×40×25 mm profile ensures a clean, professional finish — no visible hardware, no custom fabrication required.

KEY FEATURES

- ✓ **High-Strength Aluminum Construction** — corrosion-resistant alloy built for heavy-duty 280 KG lock loads
- ✓ **Frameless Glass Door Compatible** — precision fit for 10–15 mm glass door thickness
- ✓ **Compact Low-Profile Design** — 180×40×25 mm footprint — minimal visual impact on glass aesthetics
- ✓ **Precision Machined Mounting** — factory-drilled holes for clean, repeatable alignment
- ✓ **Universal 280 KG Lock Fit** — compatible with all standard 280 KG class EM locks
- ✓ **24-Month Warranty** — backed by reliable after-sales support

APPLICATIONS

- Corporate Offices with Glass Partitions
- Banks & Financial Institutions
- Hotels & Hospitality Lobbies
- Retail Stores & Showrooms
- Educational Institutions
- Commercial Buildings with Frameless Glass

TECHNICAL SPECIFICATIONS

Model	NX-280U
Bracket Type	U-Bracket (Glass Door Mount)
Material	High-Strength Aluminum Alloy
Compatible Glass Thickness	10 – 15 mm
Compatible Lock Class	280 KG EM Locks
Dimensions (L×W×H)	180 × 40 × 25 mm
Surface Finish	Anodized (Silver)
Mounting	Surface mount, screw-fixed
Corrosion Resistance	Yes (anodized finish)
Operating Temperature	-10°C to 55°C
Warranty	24 Months
Package Contents	U-bracket, mounting screws, manual

CERTIFICATIONS & COMPLIANCE

CE

RoHS