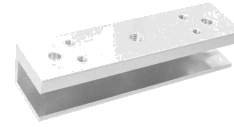


NX-180U

EM Lock Bracket for Glass Doors



*Built for glass.
Precision engineered.*

U-shaped mounting bracket engineered specifically for frameless glass door EM lock installations. The NX-180U is machined from **anodized aluminum alloy**, accommodating glass thickness of 8–15 mm with a 90° door opening angle. Its precision-drilled mounting pattern ensures clean, secure alignment with all standard 180–280 KG class EM locks — no custom fabrication required.

KEY FEATURES

- ✓ **Anodized Aluminum Construction** — corrosion-resistant, scratch-proof finish built for longevity
- ✓ **Glass Door Compatible** — fits 8–15 mm frameless glass door thickness precisely
- ✓ **90° Door Opening Support** — optimized geometry for full 90-degree swing clearance
- ✓ **Precision Machined** — factory-drilled mounting holes for accurate, repeatable alignment
- ✓ **Universal EM Lock Fit** — compatible with all standard 180–280 KG class EM locks
- ✓ **24-Month Warranty** — backed by reliable after-sales support

APPLICATIONS

- Corporate Offices with Glass Partitions
- Banks & Financial Institutions
- Hotels & Hospitality Lobbies
- Retail Stores & Showrooms
- Educational Institutions
- Residential & Apartment Complexes

TECHNICAL SPECIFICATIONS

Model	NX-180U
Bracket Type	U-Bracket (Glass Door Mount)
Material	Anodized Aluminum Alloy
Compatible Glass Thickness	8 – 15 mm
Door Opening Angle	90°
Compatible Lock Class	180 – 280 KG EM Locks
Dimensions (L×W×H)	180 × 28 × 41 mm
Surface Finish	Anodized (Silver)
Mounting	Surface mount, screw-fixed
Operating Temperature	-10°C to 55°C
Warranty	24 Months
Package Contents	U-bracket, mounting screws, manual

CERTIFICATIONS & COMPLIANCE

CE

RoHS