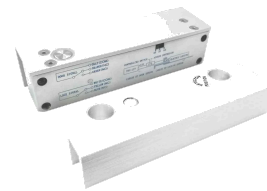


NX-280F

Frameless Glass Door Bolt Lock

*Engineered for glass.
Secured for life.*



Microprocessor-controlled electric bolt lock engineered for frameless glass, wooden, metal, and fireproof doors. The NX-280F operates on an **ultra-low 80mA working current** with photoelectric feedback technology — eliminating mechanical wear and extending lifespan beyond 500,000 cycles. Adjustable time delay (0/3/6/9 sec), built-in signal output, and bidirectional/sliding door compatibility make it a versatile choice for modern access control deployments.

KEY FEATURES

- ✓ **Ultra-Low 80mA Working Current** — microprocessor-controlled design cuts energy use by up to 90%
- ✓ **Photoelectric Control Technology** — no mechanical parts to wear — zero mechanical failure risk
- ✓ **Adjustable Time Delay** — 0, 3, 6, or 9 seconds configurable to suit any access scenario
- ✓ **Built-in Signal Output** — door/lock status monitoring for integration with access systems
- ✓ **500,000-Cycle Lifespan** — factory-tested for long-term, maintenance-free operation
- ✓ **24-Month Warranty** — backed by reliable after-sales support

APPLICATIONS

- Corporate Offices & Commercial Buildings
- Banks & Financial Institutions
- Hotels & Hospitality
- Hospitals & Healthcare
- Educational Institutions
- Residential & Apartment Complexes

TECHNICAL SPECIFICATIONS

Model	NX-280F
Lock Type	Electric Bolt Lock (Locked when energized)
Input Voltage	DC 12V ±10%
Start Current	950 mA
Working Current	80 mA (ultra-low power)
Signal Output	Yes (door signal + lock signal)
Time Delay	0 / 3 / 6 / 9 seconds (adjustable)
Door Type Applicable	Glass, Wooden, Metal, Fireproof
Door Direction	Bidirectional & Sliding doors
Control Technology	Photoelectric (no mechanical failure)
Lock Body Dimensions	148 × 43 × 39 mm (L×W×H)
Strike Dimensions	148 × 43 × 25 mm (L×W×H)
Weight	1.6 Kg
Operating Temperature	-10°C to 55°C
Warranty	24 Months
Package Contents	Lock body, strike plate, mounting hardware, manual

CERTIFICATIONS & COMPLIANCE

CE

RoHS